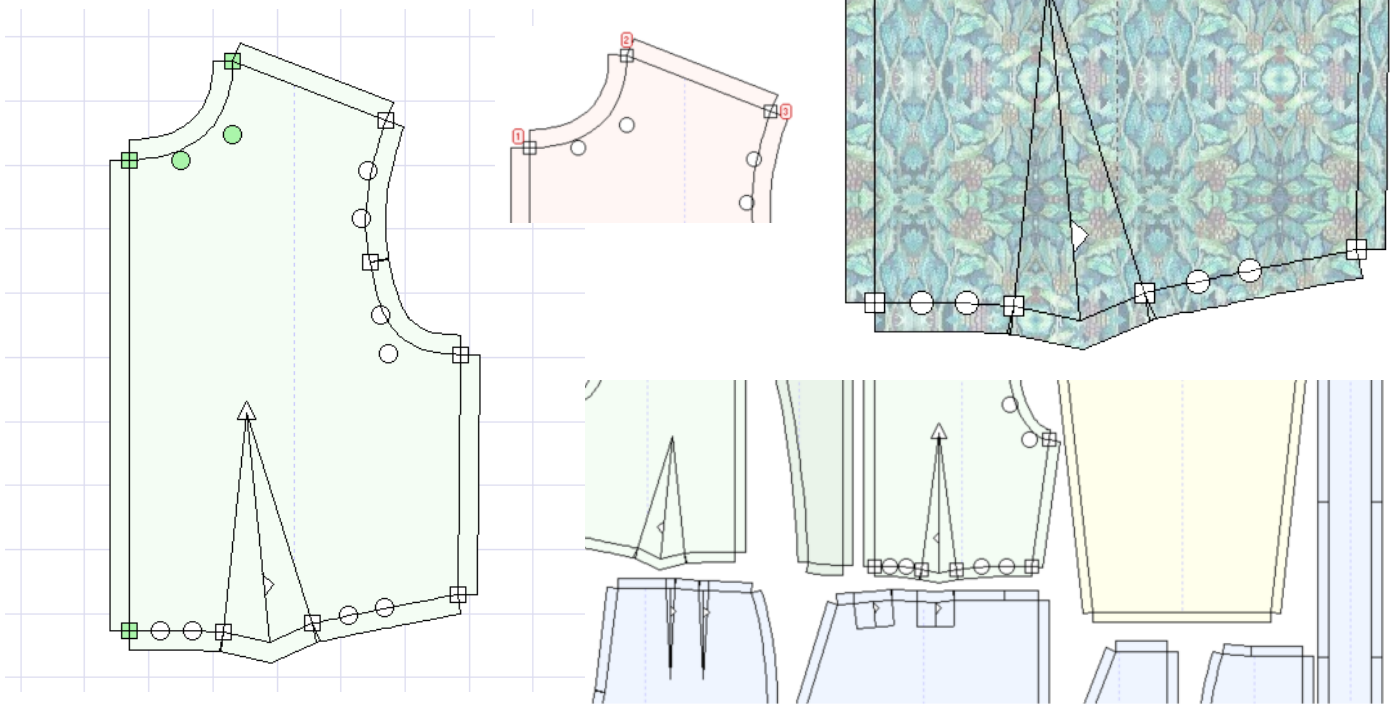


# What's new in *Fittingly Sew 2* ...

Here are some of the new or improved features.

## Improved View Options

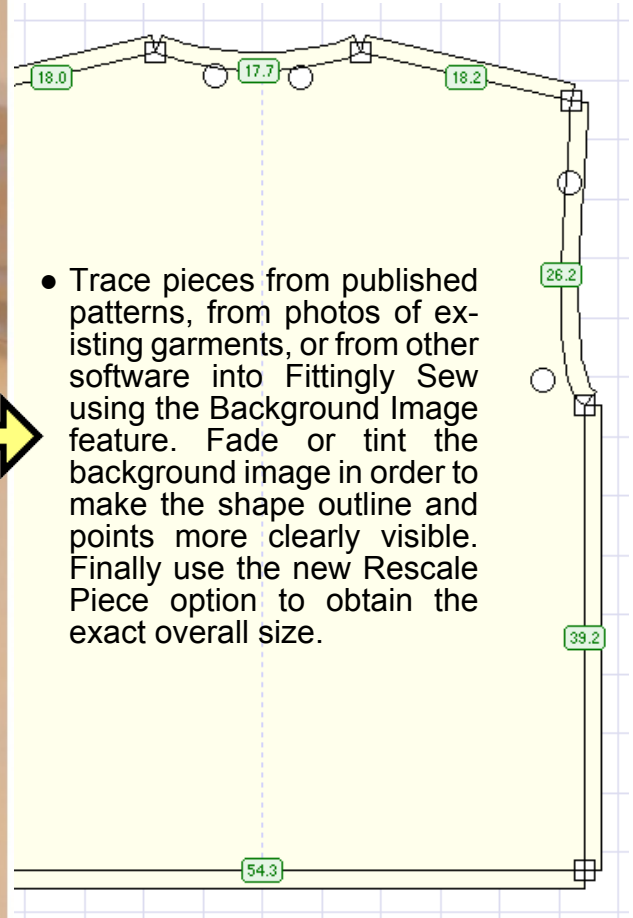
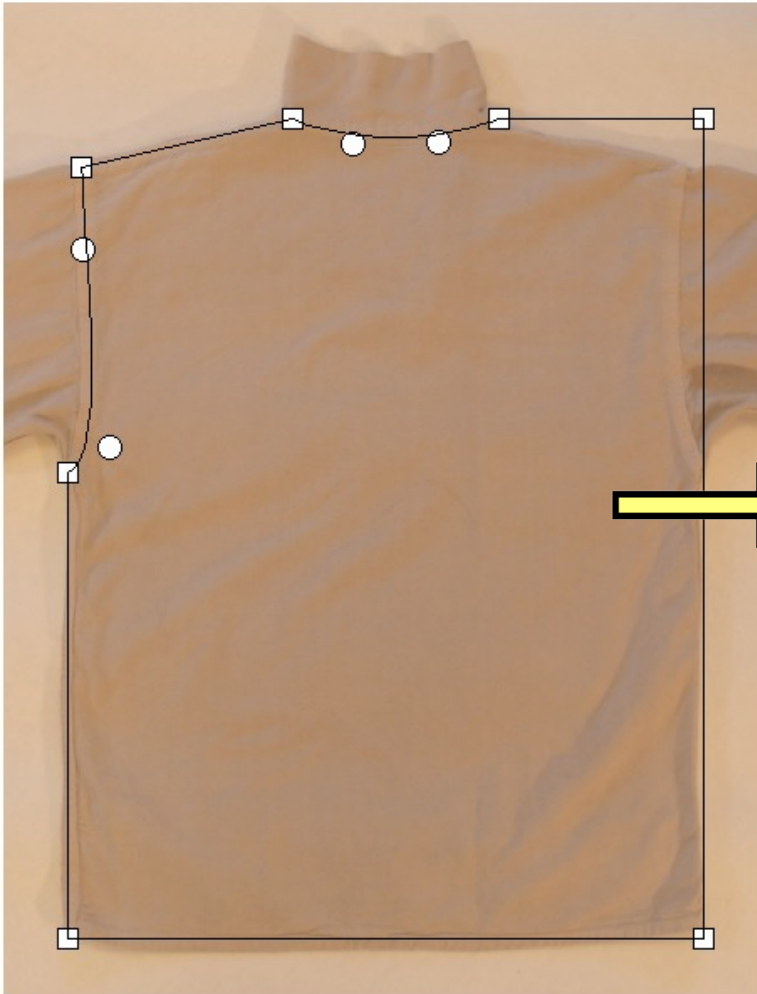
- Use scans or photos of fabrics to display fabric colour patterns on your pattern pieces.
- Enjoy the use of colour while designing. Pattern pieces are now colour coded according to how they were made, with facings having a darker shade of the parent piece colour. Selected points are now colour highlighted.
- New grid & zoom options.



## Updated to current software standards

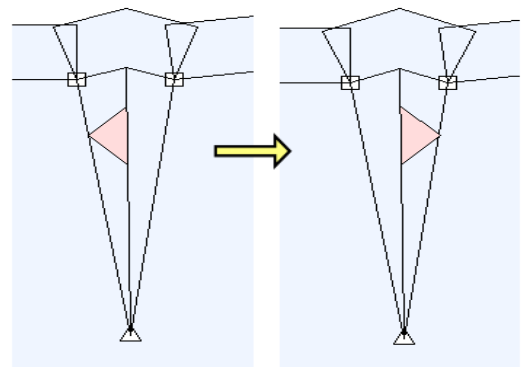
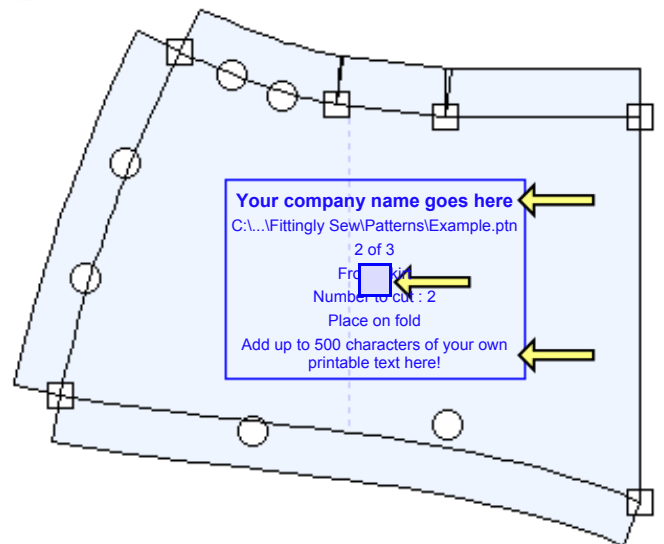
- Run under 32-bit and 64-bit Windows from XP to current versions.
- Use long file and folder names.
- Pick from lists of recently used Sloper, Pattern, or Fabric files.
- Zoom using a mouse wheel.
- Use 20 levels of undo and redo.
- Set up your own default folders for slopers, patterns, images for tracing, fabrics, and fabric scans & photos.
- Check easily for maintenance updates.

## Improved Editing Options



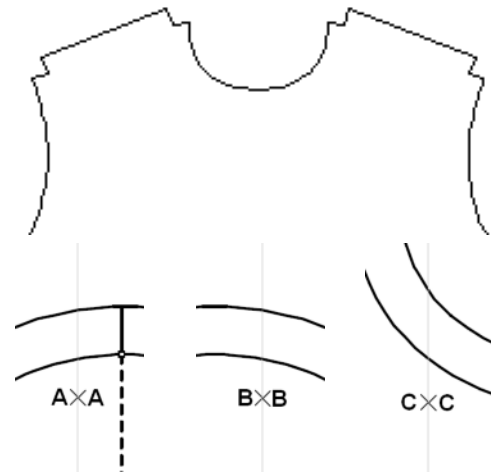
- Trace pieces from published patterns, from photos of existing garments, or from other software into Fittingly Sew using the Background Image feature. Fade or tint the background image in order to make the shape outline and points more clearly visible. Finally use the new Rescale Piece option to obtain the exact overall size.

- Enter your own heading to be printed in the Piece Info box.
- Use the new pop-up central tag in Piece Info to drag the box to where you want.
- Add your own text at the bottom of the box.
- Click on a dart direction tag to change its direction.
- Use the Stencil property to identify any pieces that are not part of the final pattern and which are not to be printed.
- Use the non-fabric area as a workspace, or to park pieces while the lay plan is being rearranged. Pieces outside the fabric area can be omitted from the printout.
- Import pieces into a pattern from a sloper or another pattern.
- Rescale pieces up or down by a given proportion.
- Select points or pieces without risk of accidentally moving them.
- Move split lines precisely using the keyboard.
- Select very close points unambiguously.
- See a complete curve while dragging its control points.



## Printing

- Use Fittingly Sew to drive automatic cutting plotters. There is a print option to construct lines along only the outer seam allowance lines.
- Print at any percentage of actual size between 5% and 200%.
- Improved markings for joining printing pages together.
- Make scaled paper models with fabric colour pattern on the garment pieces.



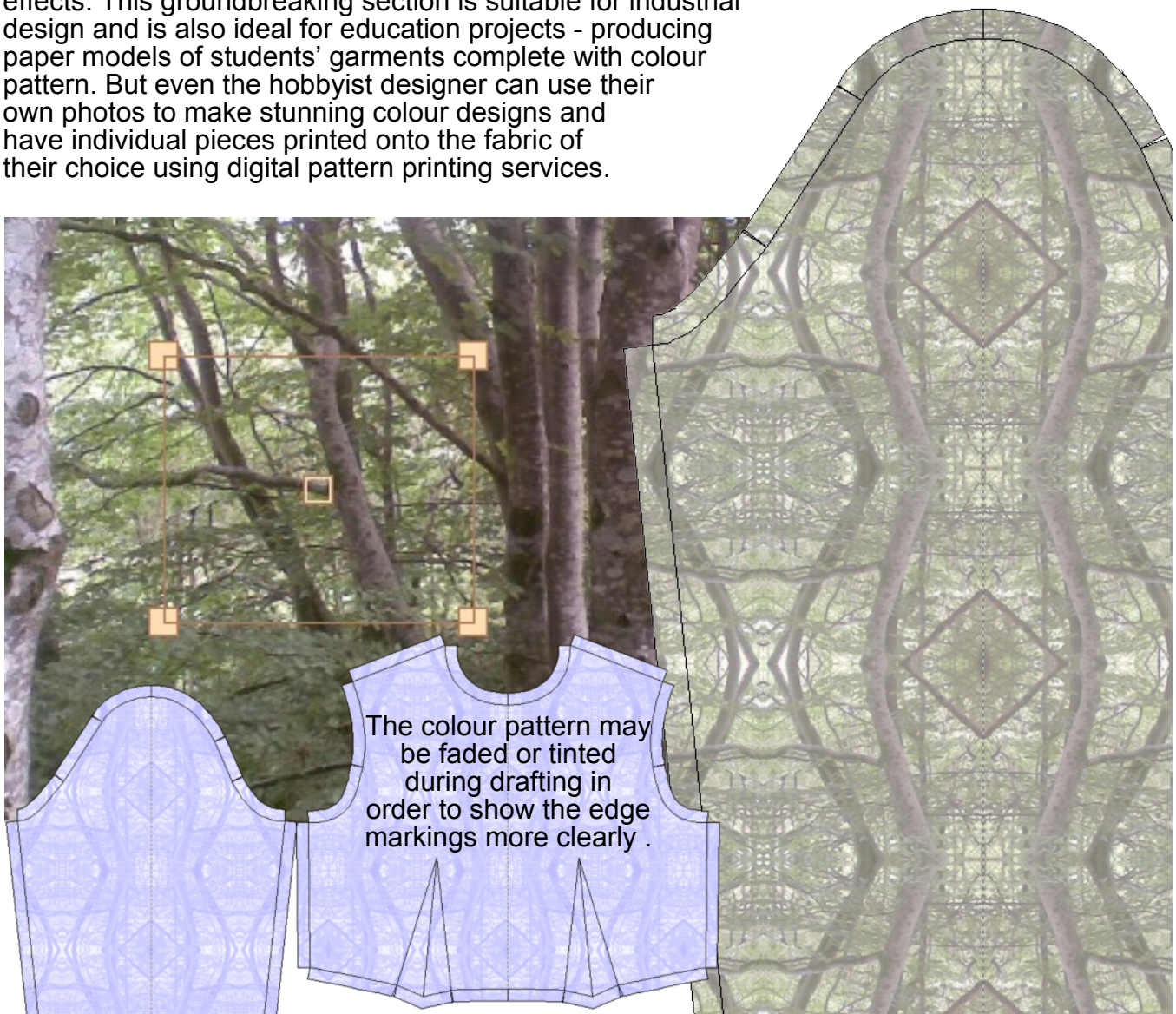
## Scan or photograph your fabric for a precise fabric layplan



- Identify the colour pattern repeat of your fabric and view the fabric on your garment pieces.
- Use a curved selection box to counteract perspective or drape effects in photos.
- Adjust the positions of pieces on the layplan so that the colour pattern falls on the pieces according to your preference.

## Join the digital fabric printing revolution!

Design totally original fabric colour patterns starting from any graphic image using spatial distortions, geometric reflections and colour effects. This groundbreaking section is suitable for industrial design and is also ideal for education projects - producing paper models of students' garments complete with colour pattern. But even the hobbyist designer can use their own photos to make stunning colour designs and have individual pieces printed onto the fabric of their choice using digital pattern printing services.



## System requirements

- Any version of Windows from XP onwards.
- Screen resolution at least 800 x 600 pixels.
- Less than 100 Mbytes disk space.
- Network licence available.
- The manual is supplied as a PDF file.

Fittingly Sew 2 uses the same well proved principles of garment construction as earlier versions. A pattern can be started in several ways:-

- from a range of pattern templates, and sized from slopers or standard sizes.
- adapted from sloper pieces.
- constructed from square blocks.
- traced from other sources (new).

# Soft Byte LTD

The Stone House,  
Quarry Lane,  
Nantmawr,  
Oswestry,  
Shropshire,  
SY10 9HH, UK.  
UK ++1691 828556  
[info@softbyte.co.uk](mailto:info@softbyte.co.uk)  
[www.softbyte.co.uk](http://www.softbyte.co.uk)